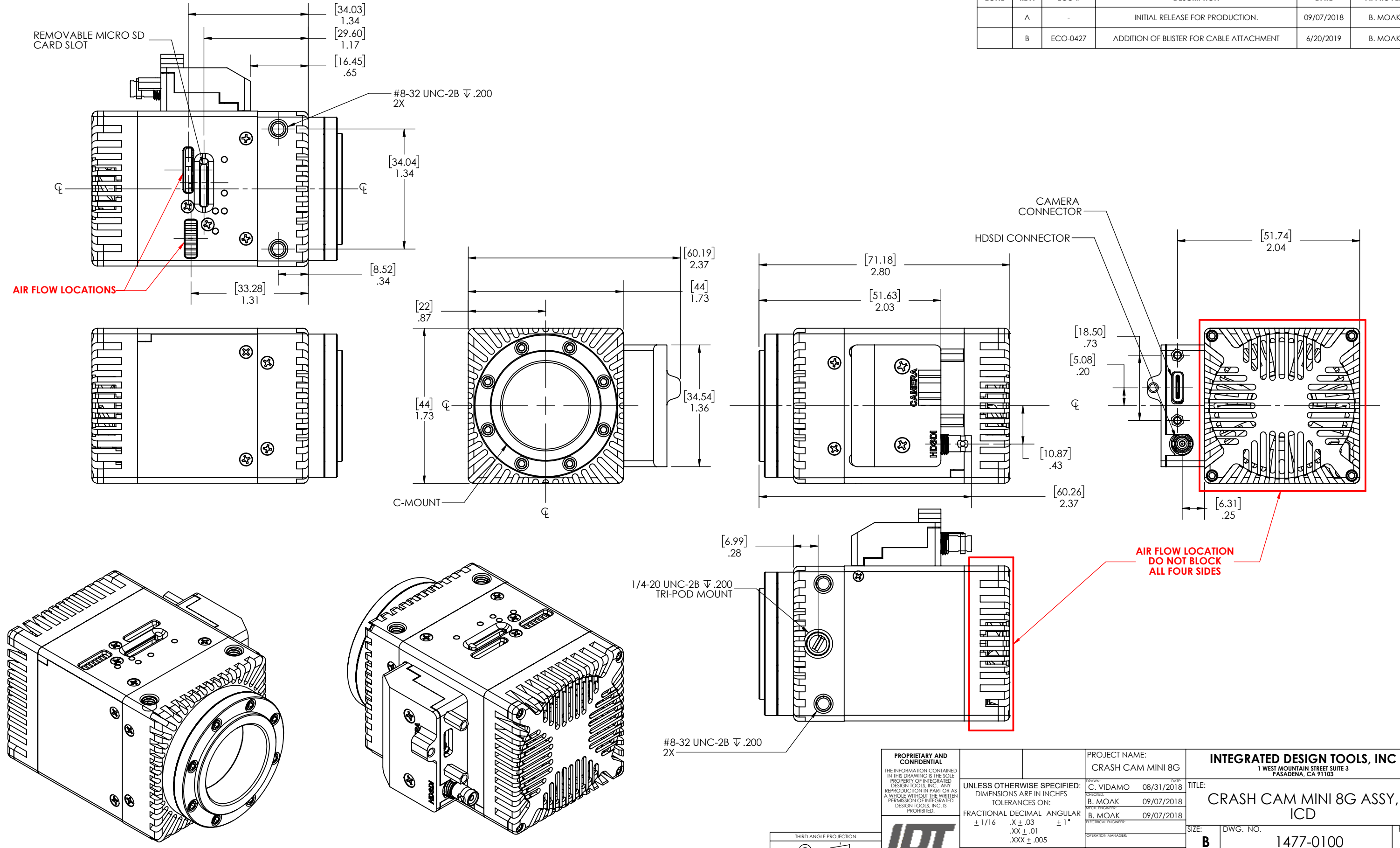


NOTES: UNLESS OTHERWISE SPECIFIED

| REVISIONS | | | | | |
|-----------|------|----------|--|------------|----------|
| ZONE | REV. | ECO # | DESCRIPTION | DATE | APPROVED |
| | A | - | INITIAL RELEASE FOR PRODUCTION. | 09/07/2018 | B. MOAK |
| | B | ECO-0427 | ADDITION OF BLISTER FOR CABLE ATTACHMENT | 6/20/2019 | B. MOAK |



| | | | |
|---|---|---|---|
| PROPRIETARY AND CONFIDENTIAL THE INFORMATION CONTAINED IN THIS DRAWING IS THE SOLE PROPERTY OF INTEGRATED DESIGN TOOLS, INC. ANY REPRODUCTION IN PART OR AS A WHOLE WITHOUT THE WRITTEN PERMISSION OF INTEGRATED DESIGN TOOLS, INC. IS PROHIBITED. | UNLESS OTHERWISE SPECIFIED: DIMENSIONS ARE IN INCHES TOLERANCES ON: FRACTIONAL DECIMAL ANGULAR $\pm 1/16$.X $\pm .03$ $\pm 1^\circ$.XX $\pm .01$.XXX $\pm .005$ | PROJECT NAME: CRASH CAM MINI 8G DATE: C. VIDAMO 08/31/2018 CHECKED: B. MOAK 09/07/2018 MECH. ENGINEER B. MOAK 09/07/2018 ELECTRICAL ENGINEER OPERATIONS MANAGER: PROGRAM MANAGER: | INTEGRATED DESIGN TOOLS, INC 1 WEST MOUNTAIN STREET SUITE 3 PASADENA, CA 91103 TITLE: CRASH CAM MINI 8G ASSY, ICD SIZE: B DWG. NO. 1477-0100 SCALE: 1:1 DATE: 6/20/2019 SHEET 1 OF 1 |
| | THIRD ANGLE PROJECTION | | REV B |