



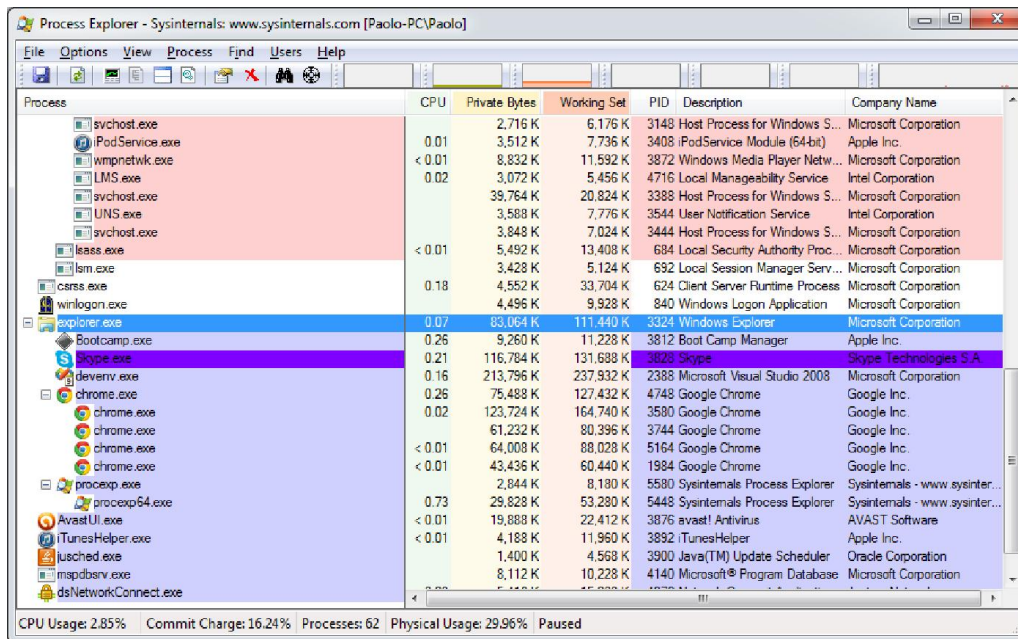
## IDT technical Note: 0010 (2014/03/27)

### “How To: detect which process is locking a file or a folder”

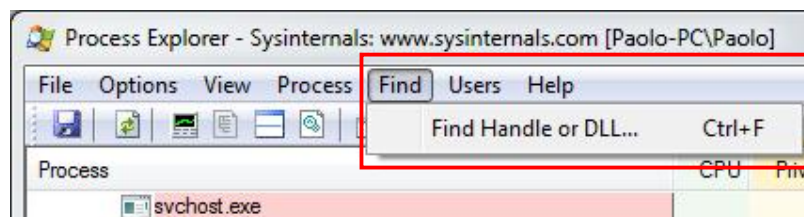
A Microsoft tool, Process Explorer, shows you which program has a particular file or directory open.

To do that, follow the instructions below:

- Download the "ProcessExplorer.zip file from the Microsoft website (see the link below).  
<http://technet.microsoft.com/en-us/sysinternals/bb896653.aspx>
- Copy the content of the zip file into a folder on your computer and run the procexp.exe file. A window listing all the running processes will appear (see below).

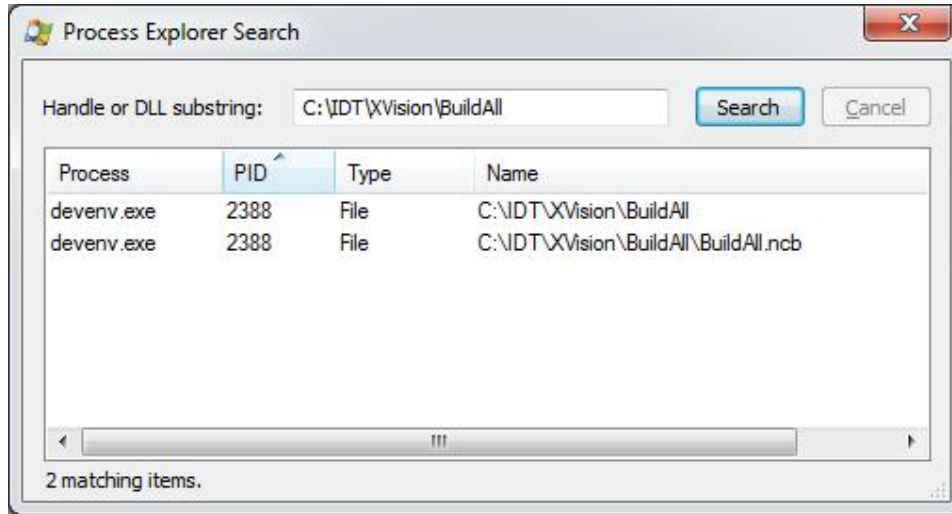


- From the Find menu, select "Find Handle or DLL..." (see below).





- The dialog box below will appear.



- In the "Handle or DLL substring" field, enter the path to the locked folder (in the example above it's "C:\IDT\XVision\BuildAll").
- Click "Search". All processes which are locking files in that folder should be listed.